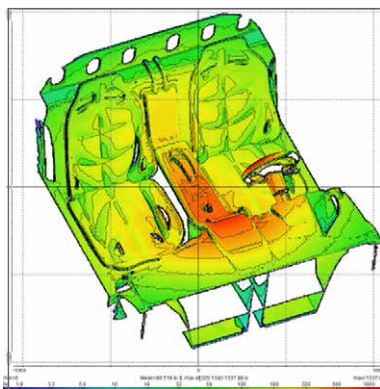
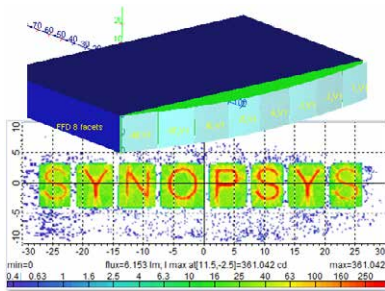
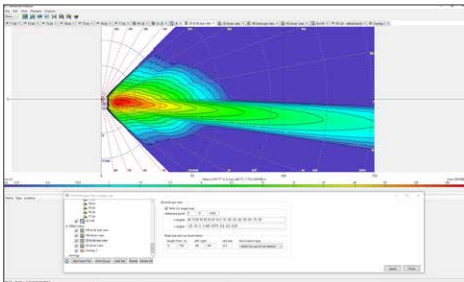
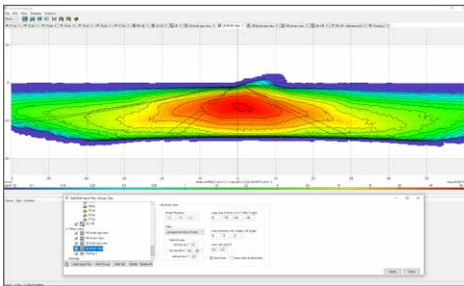


# What's New in LucidShape Version 2022.03

Fast, Accurate Modeling and Analysis of Automotive Lighting Products



## Advanced Analysis Tool

The Advanced Analysis tool streamlines analysis steps, provides access to a wide range of new analysis tools, and simplifies interactive design analysis and troubleshooting.

- Interactively analyze a light distribution to see if your system meets requirements by performing measurements on points, splines, and polygons.
- Analyze multiple lamps at one time by combining multiple UV Data files and taking measurements on the results. For example, you can iteratively manipulate the individual or grouped UV Data files to produce an artificial ideal sum light distribution.
- Save measurement sets to reuse on different UV Data files, for example UV Data files resulting from multiple design iterations.
- Export measurements to a table for later review.

## MacroFocal Improvements

MacroFocal improvements support freeform lens and reflector designs.

- Use Freeform Design feature with multi-faceted lamps
- Easily navigate through LID information by facet

## Import/Export Improvements

Import and export improvements include the ability to export individual shapes as individual files, import multiple files into the same model, and export Mesh Surfaces as STL files.

## Automatic Aiming

LucidShape now supports automatic vertical aiming in test tables for each light distribution.

## Project Lux Sensor

Easily create a UV Data View by specifying the desired view plane orientation and extent. You can then deploy the new Advanced Analysis tool to effortlessly perform a multitude of point, curve, slice, and zone measurements.

For more information, please contact the Synopsys Optical Solutions team at (626) 795-9101, visit [synopsys.com/optical-solutions/lucidshape](http://www.synopsys.com/optical-solutions/lucidshape), or send an e-mail to [optics@synopsys.com](mailto:optics@synopsys.com).